

CERAMIN<sup>®</sup>  
vario



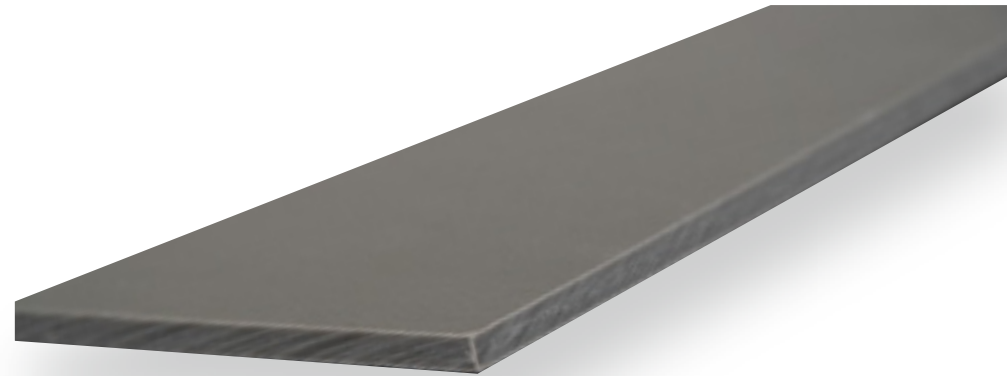
»The real **alternative**  
to natural stone and tiles!«



## **CERAMIN® – the new ceramic-like composite**

The CERAMIN® components are bonded together at low temperatures – and thus in an energy-saving and low emissions production process.

- extremely robust
- waterproof
- heavy duty
- PVC free
- contaminant free
- ecological
- 100 % recoverable
- easily recyclable
- lightweight
- tested quality made in Germany



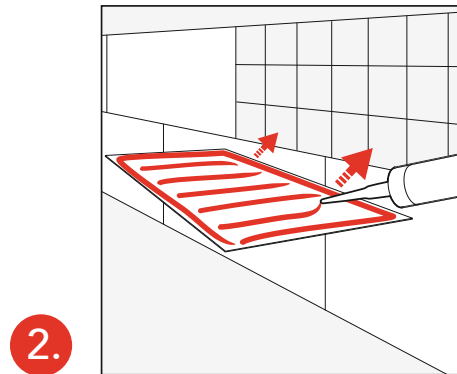
# CERAMIN® Vario

»The real **alternative**  
to natural stone and tiles!«

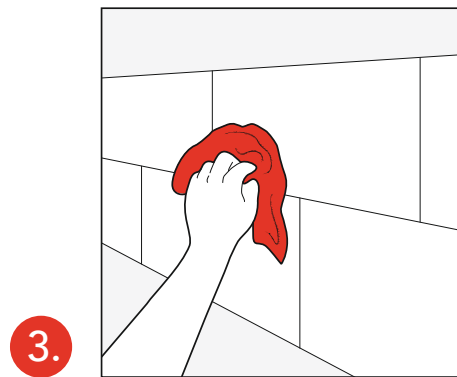
It's so easy!



Clean substrate and pretreat properly. Existing tiles do not have to be removed, simply paste over them.

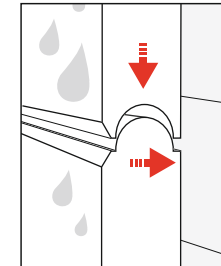


Apply adhesive according to instructions, lay CERAMIN® Vario. Simply cut to size using a cutter knife or laminate cutter.

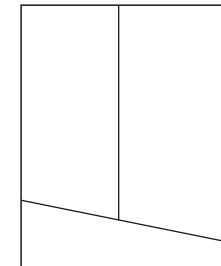


Clean – ready.  
No filling of joints, no further treatment necessary.

Lay and it's  
done ...



Water-repelling  
profile system



Elegant  
micro-joint

...joint filling  
unnecessary!



## Format collection 40/120 [392x1,180 mm]



● Art.-Nr. 44076 Oil shale



● Art.-Nr. 44077 White Tadelakt



● Art.-Nr. 44078 Brown lime plaster



● Art.-Nr. 44079 White polished plaster



● Art.-Nr. 44080 Cream concrete

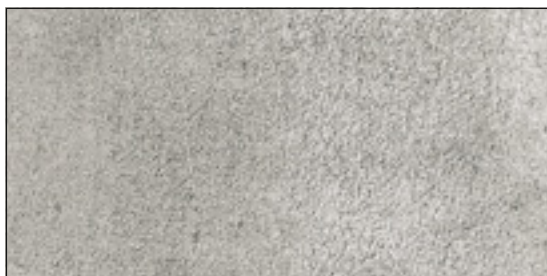


● Art.-Nr. 44081 Grey lime plaster

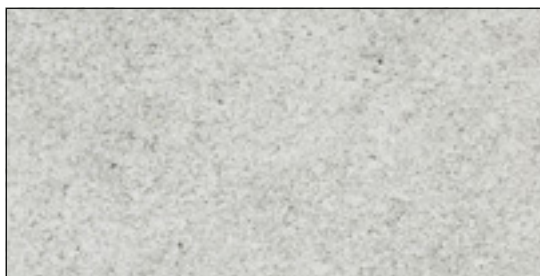


Art.-Nr. 44079 White polished plaster

## Format collection 40/80 [392x780 mm]



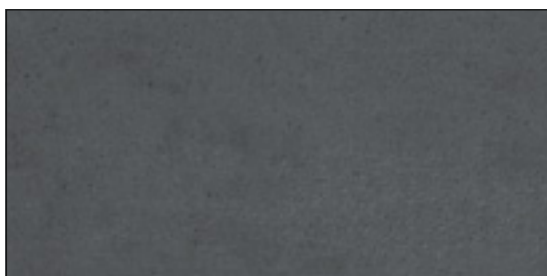
● Art.-Nr. 44062 White Tadelakt



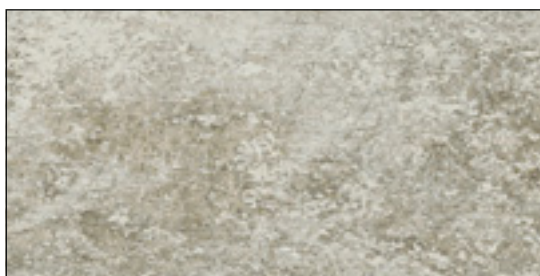
● Art.-Nr. 44067 Concrete cream-coloured



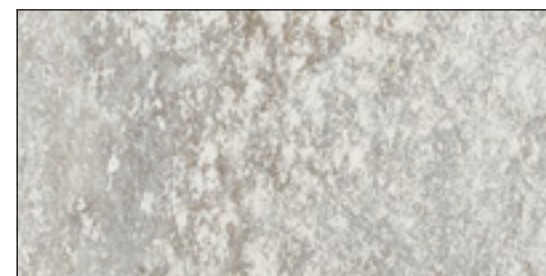
● Art.-Nr. 44068 Grey lime plaster



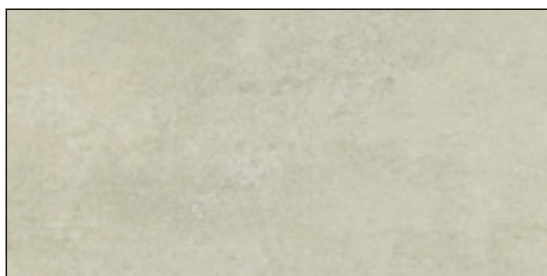
● Art.-Nr. 44069 Nero assoluto



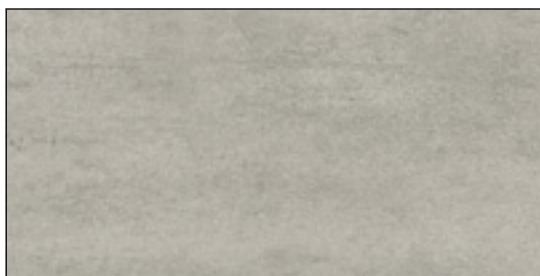
● Art.-Nr. 44070 Beige natural stone



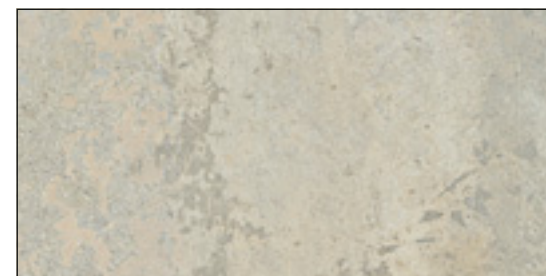
● Art.-Nr. 44071 Cream natural stone



● Art.-Nr. 44072 Grey-brown Tadelakt



● Art.-Nr. 44073 Cream Tadelakt



● Art.-Nr. 44074 Shell limestone



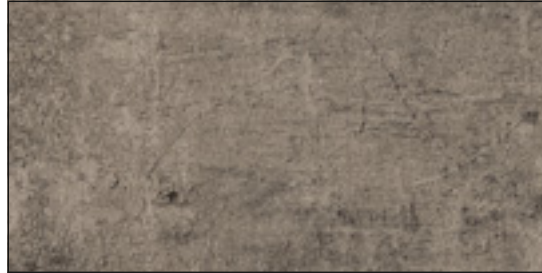


44062 White Tadelakt

## Format collection 30/60 [315x642 mm]



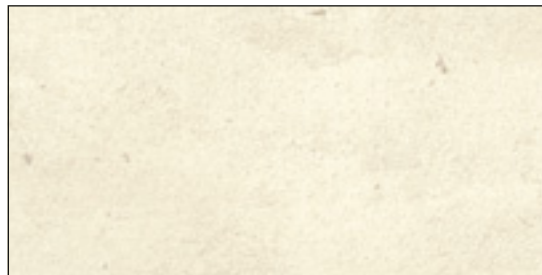
● Art.-Nr. 43036 Grey lime plaster



● Art.-Nr. 43039 Brown lime plaster



● Art.-Nr. 43040 White lime plaster



● Art.-Nr. 43041 Beige lime plaster



● Art.-Nr. 43042 Light concrete





Art.-Nr. 43041 Beige lime plaster

## Format collection 20/130 [208 x 1,294 mm]



● Art.-Nr. 47614 Rustic pitch pine



● Art.-Nr. 47621 Matured timber



● Art.-Nr. 47622 Black larch



● Art.-Nr. 47623 Nature oak oiled





Art.-Nr. 47622 Black larch (floor), Art.-Nr. 44077 White Tadelakt (wall)



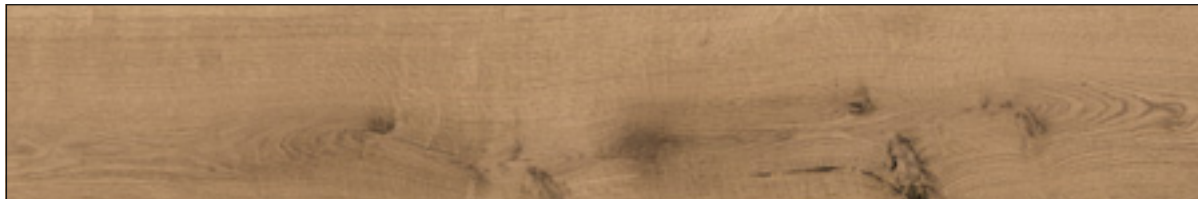
## Format collection 20/130 [208 x 1,294 mm]



● Art.-Nr. 47624 Patinated red cedar



● Art.-Nr. 47627 American Whitewood



● Art.-Nr. 47631 Steamed sessile oak



Art.-Nr. 47631 Steamed sessile oak



Renovate with **CERAMiN®** Vario – it's so easy!



Guarantee



Heavy duty



Thickness



Water-repelling  
profile system



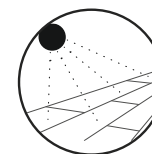
Micro-bevel



Surface sealing



Waterproof



Resistance to  
UV radiation



Easy to clean



Slip resistance



Made in Germany

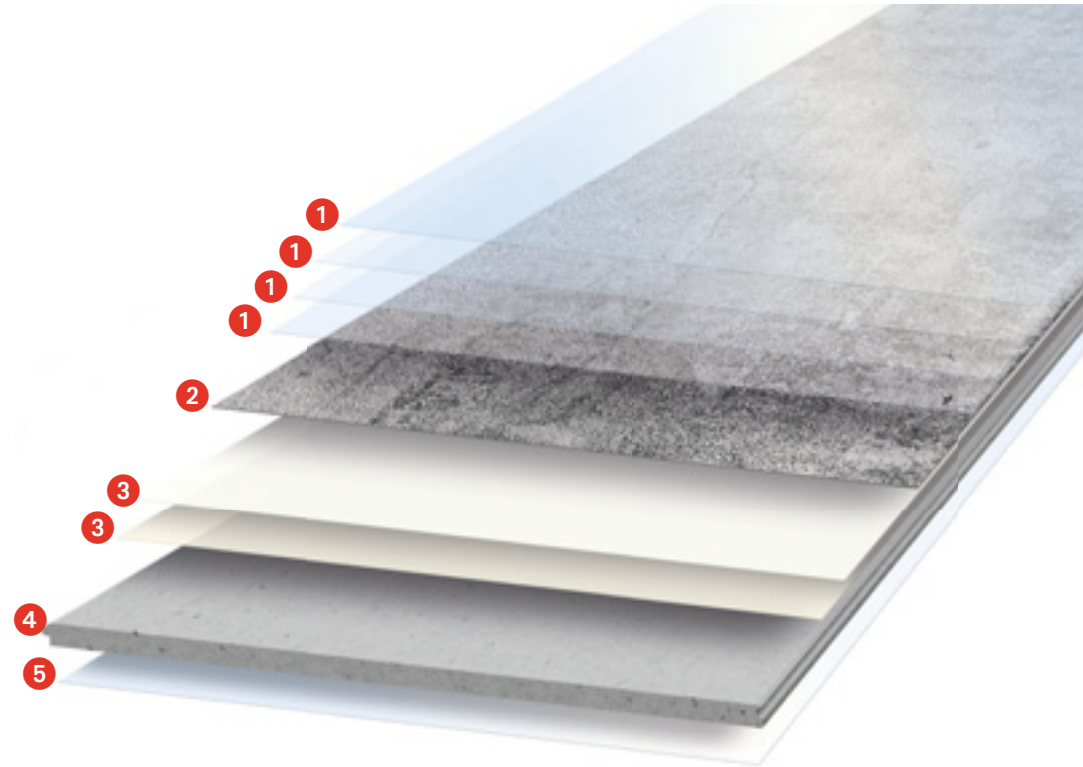


[www.blauer-engel.de/uz120](http://www.blauer-engel.de/uz120)



# All the advantages of a ceramic tile and so much more ...

- Water-repellent profile system
- Elegant micro-joint, no joint filling necessary
- Easy to lay, without loud machines
- Cut to size using a cutter knife or laminate cutter
- Far less heavy than a ceramic tile
- Large format tiles easy to lay
- Easy adhesive bonding on walls and floors
- Simply paste over old tiles
- Waterproof and easy care
- Silent, dust-free laying
- As durable as a ceramic tile
- Dimensionally stable and heavy duty



## Build-up

- |                                    |  |
|------------------------------------|--|
| 1 Multi-layer Sealtec surface seal | 4 CERAMIN® carrier board with water-repelling profile system |
| 2 Digital print decor layer        |  |
| 3 2 primer coats                   | 5 Stabilising varnish coat                                   |

# Recommended tools and accessories



● Adhesive spreader B1  
Art.-Nr. 43351

Standard substrate: 400–500 g/m<sup>2</sup>



● Adhesive spreader B3  
Art.-Nr. 43352

Rough substrate: 500–600 g/m<sup>2</sup>



● Stainless steel end Art.-Nr. 43347



● Adhesive spreader C1  
Art.-Nr. 43353

Old tiles: approx. 1.000–1.200 g/m<sup>2</sup>



● MultiConnect adhesive  
Art.-Nr. 44944 15 kg container  
Art.-Nr. 44945 5.5 kg container



● MultiConnect  
Art.-Nr. 44946  
290 ml cartridge

Please follow the particular use instructions given by the adhesive manufacturer on the packaging.

Do not remove the adhesive from the tub directly with the spreader. Use a small trowel to remove the adhesive from the tub and then transfer it onto the adhesive spreader.

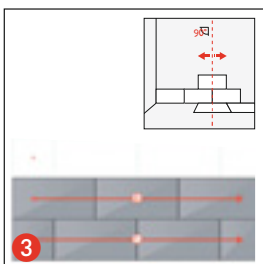
# Professional tips for laying CERAMIN® Vario



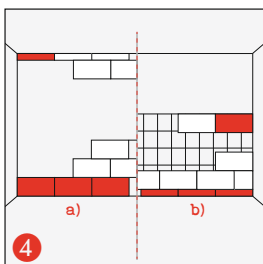
**(1) Tools:** Pencil, measuring tape, spirit level, plumbline, cutter knife, CLASSEN MultiConnect tile adhesive, adhesive spreader, end profile.



**(2) Firm, stable substrate:** permanently dry, clean, free from dust, oil and grease, loose parts and old, non-waterproof coatings and adequately level and rigid. Apply sealing coat, if necessary with sealing tape, in wet rooms and on moisture-sensitive substrates.

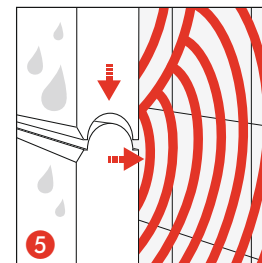


**(3) Laying on the wall**  
Mark the middle of the wall with a plumb-line or laser, align the tiles with this marker. Edge tiles should be at least half a tile wide. Recommendation: Lay tiles in brick bond. Advantage: makes the room seem larger.

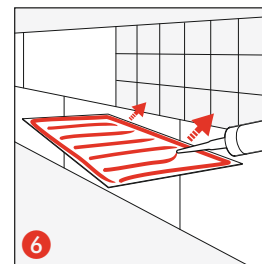


**(4) Wall-high**  
**a)** Without a defined height of the tiled area: start at the bottom with whole tiles (allow for the floor build-up).  
**b)** If height of the tiled area is fixed: end with whole tiles at the top. To do this, determine the height of the tiled area, cut the bottom tiles to fit if necessary, lay starting with the bottom row.

**(5) Full surface bonding in wet areas:** Position the CERAMIN® Vario tile in the CLASSEN MultiConnect adhesive bed with a slight sliding movement and align. Note: The tongue and groove profile must be completely interlocked.

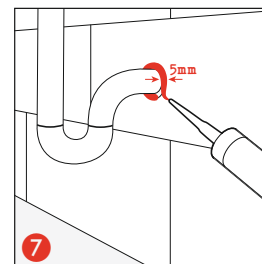


**(6) Partial bonding outside of wet areas** (e.g. WC, kitchen, etc.): Apply CLASSEN MultiConnect from the cartridge onto the back of the CERAMIN® Vario tile and press the tile onto the wall.

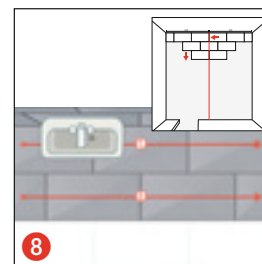


Outside corners are formed using standard quality profiles.

**(7) Seal recesses and cutouts for pipes and fitting connections with CLASSEN MultiConnect (cartridge) or matching colour silicone.**



**(8) Laying on the floor**  
In rectangular rooms stretch a plumb line centrally and parallel with the side walls. Starting at a joint or with the middle of the tile on the plumbline, align the first row with the plumbline. Lay further tiles along the wall.



Ensure continuous joints if laying tiles in adjacent rooms. Position 5 mm expansion joints under the door leaf, also note expansion joints in the screed.

Detailed laying instructions are enclosed with each pack of CERAMIN® Vario.

It's  
so easy!



Take a look.  
The CERAMIN® Vario explanatory video on YouTube



# Decor overview

CERAMIN®  
VARIO

[ Colours may vary from the flooring images due to printing ]

New wood look. (●)



Art.-Nr. 44079 White polished plaster 40/120



Art.-Nr. 43041 Beige lime plaster 30/60



Art.-Nr. 44074 Shell limestone 40/80



Art.-Nr. 43040 White lime plaster 30/60



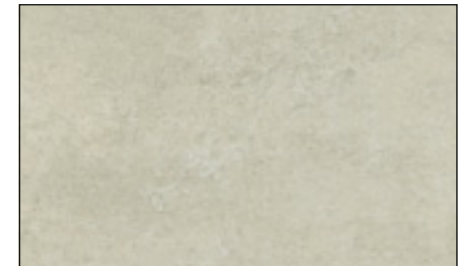
Art.-Nr. 44070 Beige natural stone 40/80



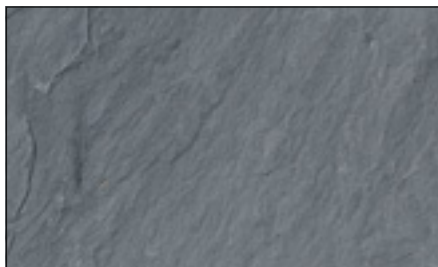
Art.-Nr. 43036 Grey lime plaster 30/60



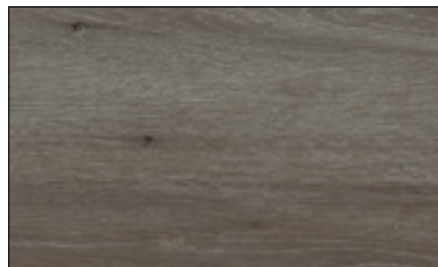
Art.-Nr. 44081 Grey lime plaster 40/120  
Art.-Nr. 44068 Grey lime plaster 40/80



Art.-Nr. 44072 Grey-brown Tadelakt 40/80



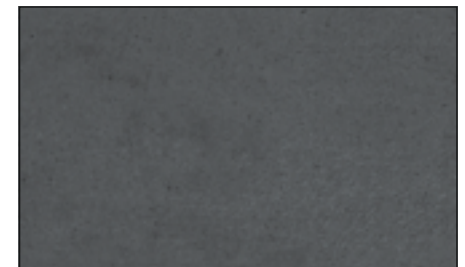
Art.-Nr. 44076 Oil shale 40/120



Art.-Nr. 47624 Patinated red cedar 30/120 ●



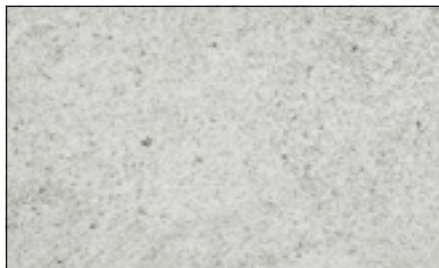
Art.-Nr. 47622 Black larch 30/120 ●



Art.-Nr. 44069 Nero assoluto 40/80



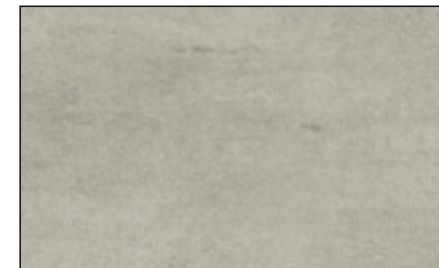
Art.-Nr. 44067 Concrete cream-coloured 40/80



Art.-Nr. 44080 Cream concrete 40/120



Art.-Nr. 43042 Light concrete 30/60



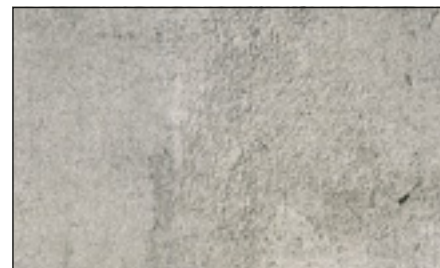
Art.-Nr. 44073 Cream Tadelakt 40/80



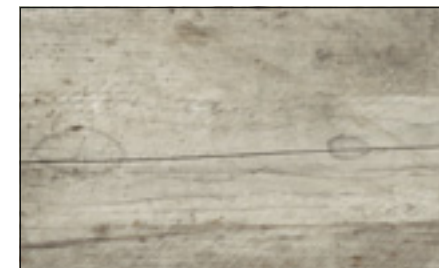
Art.-Nr. 44071 Cream natural stone 40/80



Art.-Nr. 47623 Nature oak oiled 30/120 ●



Art.-Nr. 44077 White Tadelakt 40/120  
Art.-Nr. 44062 White Tadelakt 40/80



Art.-Nr. 47614 Rustic pitch pine 30/120 ●



Art.-Nr. 44078 Brown lime plaster 40/120  
Art.-Nr. 43039 Brown lime plaster 30/60



Art.-Nr. 47631 Steamed sessile oak 30/120 ●



Art.-Nr. 47627 American Whitewood 30/120 ●



Art.-Nr. 47621 Matured timber 30/120 ●

The Classen Group is a producer, supplier and full range service provider of natural wood products and wood and natural material-based products for interior finishes. Classen develops and produces high-quality laminate floorings as well as environmentally friendly vinyl and design floor coverings exclusively in Germany and is one of the worldwide leading providers of laminate floorings. Sustainability, careful use of resources and protection of the climate and environment are binding basic values to which the Classen Group and its employees are committed. This is reflected

in the products produced and traded by Classen, whose market success is not least due to their excellent quality. Satisfying the growing requirements of trading partners and consumers is a real innovation driver of the Classen Group, which drives forward creative approaches to the renewal of products and optimisation of processes.

As the holder of numerous patents and utility models the Classen Group is one of the industry's innovation leaders. Classen is a competent global trade partner.



CLASSEN Group

Werner-von-Siemens-Straße 18–20

D-56759 Kaisersesch (Germany)

Tel. +49 2653 980-0

[info@classen.de](mailto:info@classen.de)

[www.classen.de](http://www.classen.de)